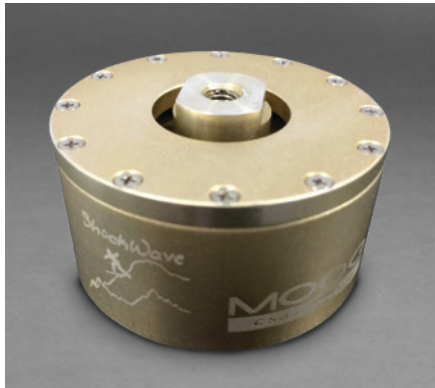


SHOCKWAVE ISOLATOR



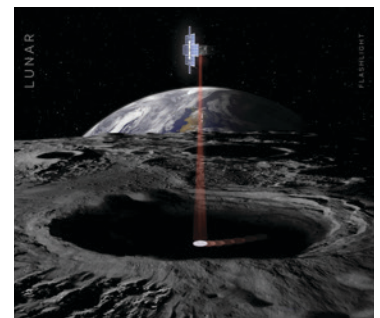
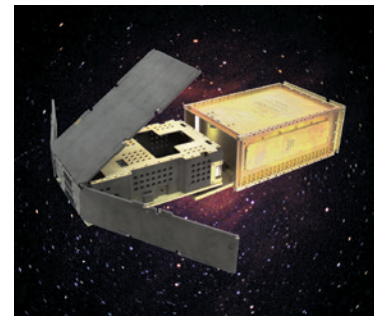
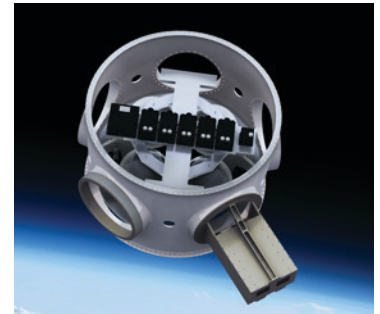
Moog's ShockWave isolator product family is the perfect solution for small payload and CubeSat launch isolation. ShockWave leverages more than two decades of spaceflight hardware heritage and packages launch worthy technology into a reliable, predictable system at a price point that is comparable to non-aerospace-worthy, elastomeric isolation mounts.

KEY FEATURES

- Low mass, low profile and highly damped isolation mounts
- Suitable for shock and random vibration load attenuation
- Configurable with metric and standard interfaces
- Predictable attenuation with a failsafe metallic load path
- Robust performance over the launch operational environment

PROVIDES VIBRATION ISOLATION FOR:

- CubeSat Dispensers
- Optical Mounts
- Machine Tools
- Electronics Components
- Directed Energy Systems



SHOCKWAVE ISOLATOR

The standard Shockwave isolator is available in two stiffnesses. The -75H1 model is lower stiffness and the -7575 model provides higher stiffness along with capability for larger loads. The nominal stiffness and loss values for these ShockWave part numbers are shown below across a broad frequency range.

-75H1 NOMINAL STIFFNESS (SW-150-1000-190-75H1)			
Description	20 Hz	50 Hz	100 Hz
Axial (lbf/in)	2,300	2,700	3,200
Lateral (lbf/in)	4,400	5,800	7,900
Loss (% Structural)	>40	>40	>40

-7575 NOMINAL STIFFNESS (SW-150-1000-190-7575)			
Description	20 Hz	50 Hz	100 Hz
Axial (lbf/in)	10,000	12,500	15,000
Lateral (lbf/in)	6,000	7,500	9,500
Loss (% Structural)	>30	>40	>40

The ShockWave isolator is modular and configurable. It will accommodate a wide variety of spacecraft configurations.

MECHANICAL DIMENSIONS (IN INCHES)
VIEW ICD FOR FURTHER DETAIL - METRIC INTERFACE UPON REQUEST

R.300
 10-32 Helicoil Insert
 .490
 Wrench Flats
 Ø1.940
 1.074
 .934
 Ø1.840
 10-32 Mounting Threads from Captive Fastener

Assembly Mass: 80 Grams
 Mounting Torque: 38 in-lb
 Survival Temp.: -60°C to 80°C
 Max. Stroke: Axial: 0.10
 Radial: 0.08 in



EXAMPLE INSTALLATION GUIDE

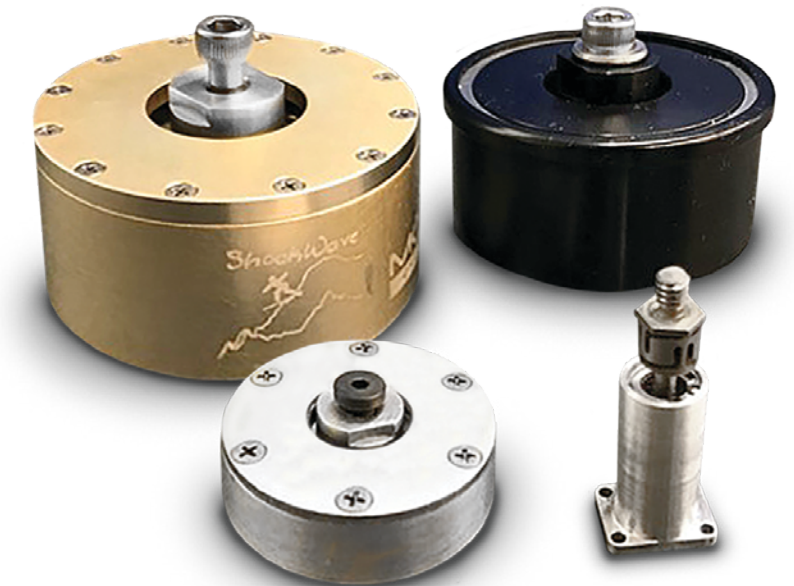
4X Ø .159 THRU ALL
 10-32 UNF THRU ALL
 (hole pattern for instructional purposes only)

1/8 Allen wrench torque captive fastener through payload thread

Base Preparation
 Install Shockwave
 Install Payload
 Install payload fasteners

Top View
 Side View

Shockwave is available in COTS parts as well as customizable options.



MOOG

SPACE AND DEFENSE GROUP

Paul Zamprelli
pzamprelli2@moog.com



Moog Space and Defense



Moog Inc.



@Moog_Inc



@Moog.Inc

Equipment described herein falls under the jurisdiction of the EAR and may require US Government Authorization for export purposes. Diversion contrary to US law is prohibited.

©2024 Moog, Inc. All rights reserved.
Product and company names listed are trademarks or trade names of their respective companies.